

5 Port Mechanical Valve/Metal Seal

Series **VZM400**

**Compact design,
Large flow capacity/Cv.0.55**

**High cycle rate,
Long life/300c.p.m.**

Piping possible to any EXH port.

Proper countermeasures can be taken for applications in which the noise of the exhaust could cause problems to the surroundings.

External pilot model available. (Option)

Foot bracket and manifold mounting possible.



Specifications

Fluid	Air, Inert gas
Operating pressure	0.15 to 1.0MPa ⁽¹⁾
Ambient and fluid temperature	-5 to 60°C (No freezing)
Effective area (Cv)	9.9mm ² (0.55)
Maximum frequency (Mechanical operation style)	300 c.p.m or less
Lubrication	Not required/Turbine oil #1 (ISO VG32)
Port size (Nominal size)	Main valve/Rc(PT) 1/8 (6A)
	Pilot valve (EXH)/M5 X 0.8
Option	Foot bracket ⁽²⁾
Weight (Basic)	150g



* Contact SMC for manifold mounting style.

Note 1) External pilot Main valve: 0 to 1.0MPa
Pilot valve: 0.15 to 1.0MPa

Note 2) The standard body can not be retrofitted with a foot bracket.

A

A

A

A

VMVR

VH

Model

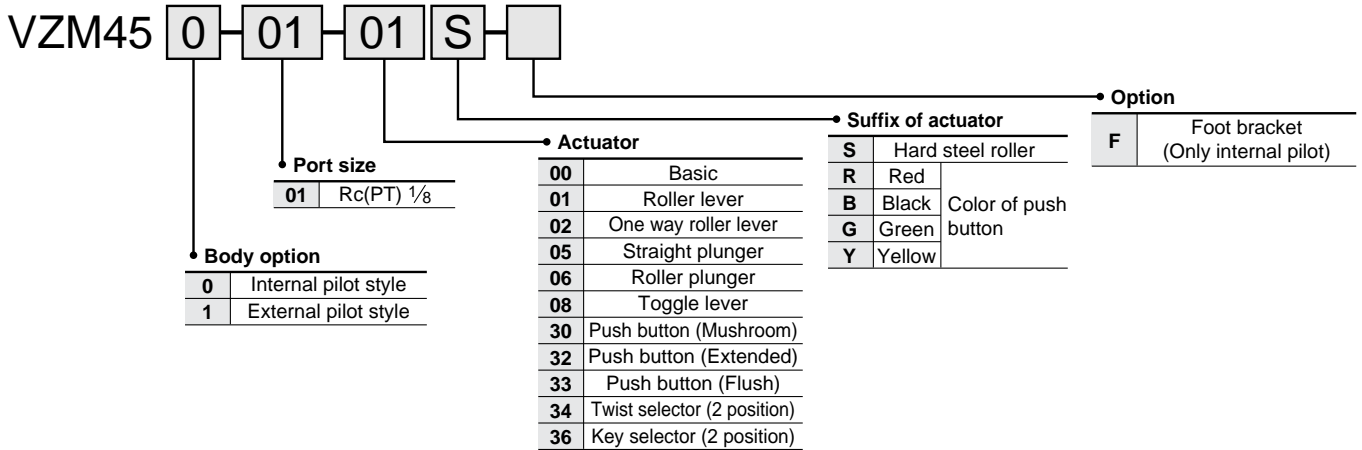
	Actuator	Model	Actuator part No.	Application
Mechanical operation	Basic	VZM450-01-00	—	—
	Roller lever	VZM450-01-01	VM-01C	Polyacetal roller
		VZM450-01-01S	VM-01CS	Hard steel roller
	One way roller lever	VZM450-01-02	VM-02C	Polyacetal roller
		VZM450-01-02S	VM-02CS	Hard steel roller
	Straight plunger	VZM450-01-05	VM-05C	—
	Roller plunger	VZM450-01-06	VM-06C	Polyacetal roller
		VZM450-01-06S	VM-06CS	Hard steel roller
Toggle lever	VZM450-01-08	VM-08C	—	
Manual operation	Push button (Mushroom)	VZM450-01-30R	VM-30CR	Red
		VZM450-01-30B	VM-30CB	Black
		VZM450-01-30G	VM-30CG	Green
		VZM450-01-30Y	VM-30CY	Yellow
	Push button (Extended)	VZM450-01-32R	VM-32CR	Red
		VZM450-01-32B	VM-32CB	Black
		VZM450-01-32G	VM-32CG	Green
		VZM450-01-32Y	VM-32CY	Yellow
	Push button (Flush)	VZM450-01-33	VM-33C	With a set of red, black, green, yellow
	Twist selector (2 position)	VZM450-01-34R	VM-34CR	Red
		VZM450-01-34B	VM-34CB	Black
		VZM450-01-34G	VM-34CG	Green
		VZM450-01-34Y	VM-34CY	Yellow
	Key selector (2 position)	VZM450-01-36	VM-36C	—



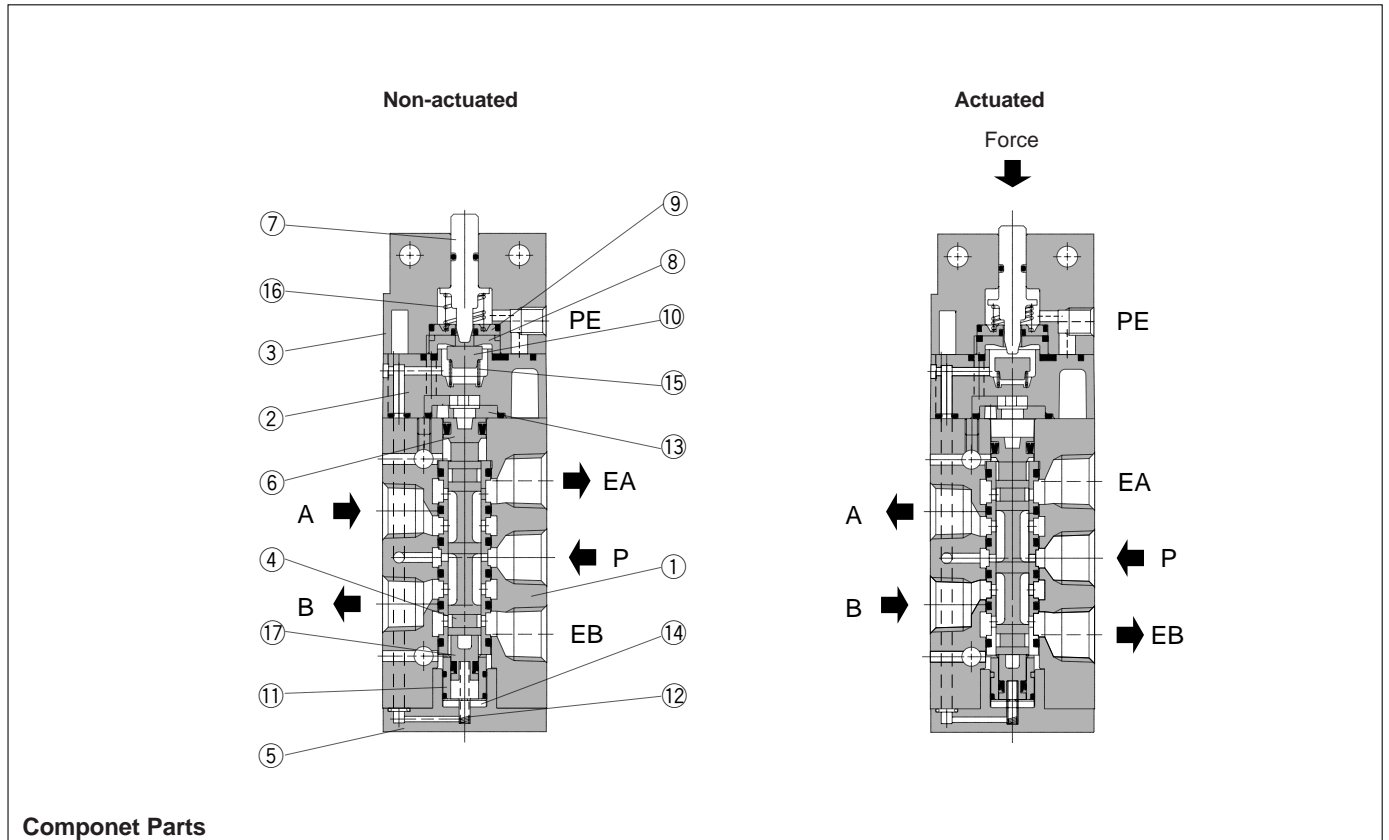
Note) Actuator replacement is available for all styles.

VZM400

How to Order



Construction



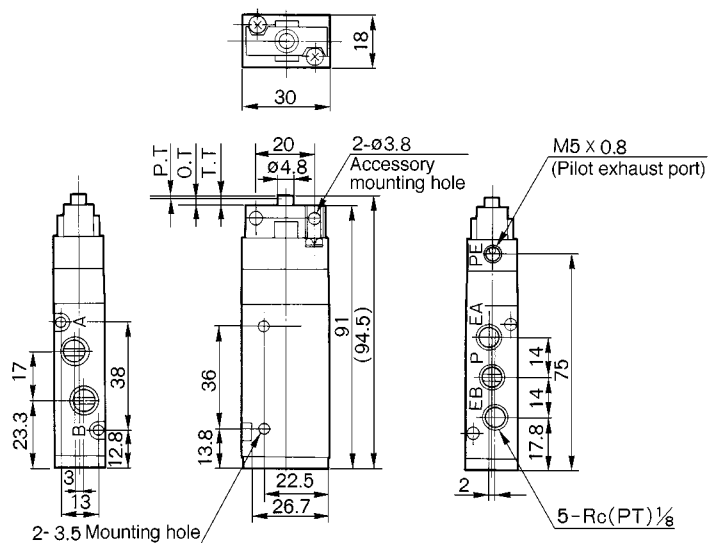
Component Parts

No.	Description	Material	Notes
①	Body	ADC	Metallic plated
②	Pilot body	PBT	Only external pilot style: ZDC
③	Head cover	ZDC	Black zinc chromated
④	Spool sleeve	Stainless steel	
⑤	End cover	POM	
⑥	Piston A	POM	
⑦	Plunger	POM	
⑧	Valve seat (A)	POM	
⑨	Valve seat (B)	POM	

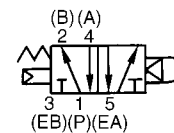
No.	Description	Material	Notes
⑩	Valve	NBR	
⑪	Piston guide B	Aluminum alloy	
⑫	Return spring	Stainless steel	
⑬	Cushion	Rubber	
⑭	Cushion	Rubber	
⑮	Valve spring	Stainless steel	
⑯	Return spring	Stainless steel	
⑰	Piston B	POM	

Series VZM400

Basic/VZM450-01-00



JIS Symbol



* 0.5MPa supply

F.O.F.*	16N
P.T.	1mm
O.T.	2mm
T.T.	3mm

S□A

V□A

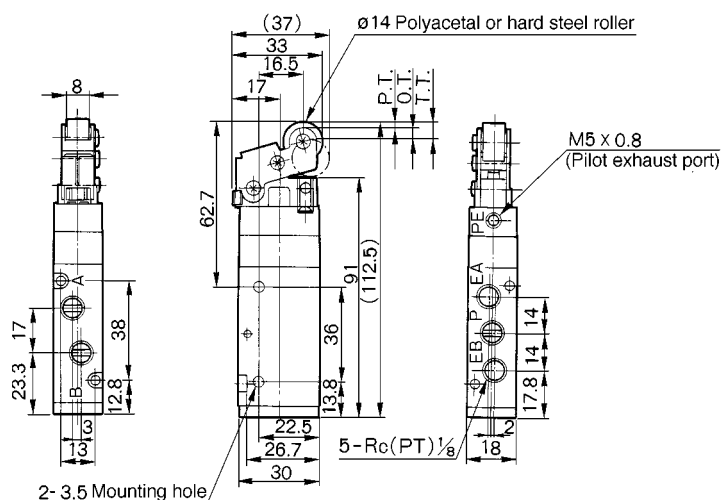
S□A

V□A

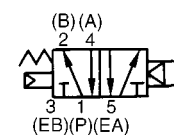
VMVR

VH

Roller Lever/VZM450-01-01, VZM450-01-01S



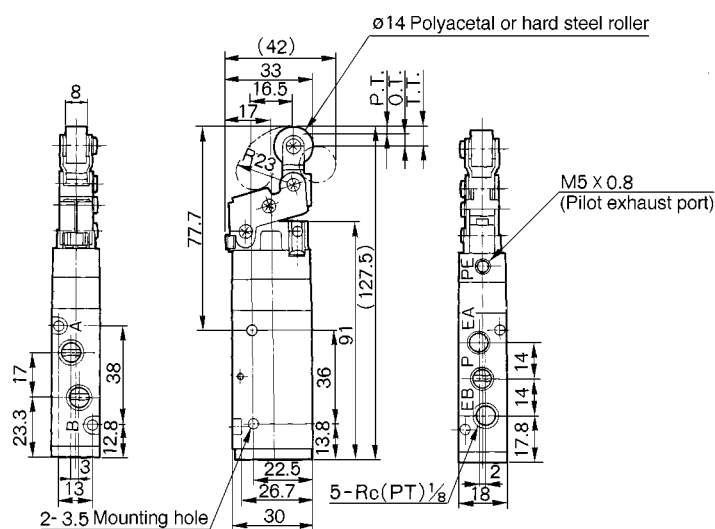
JIS Symbol



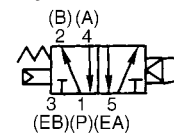
* 0.5MPa supply

F.O.F.*	8N
P.T.	2.2mm
O.T.	4mm
T.T.	6.2mm

One Way Roller Lever/VZM450-01-02, VZM450-01-02S



JIS Symbol



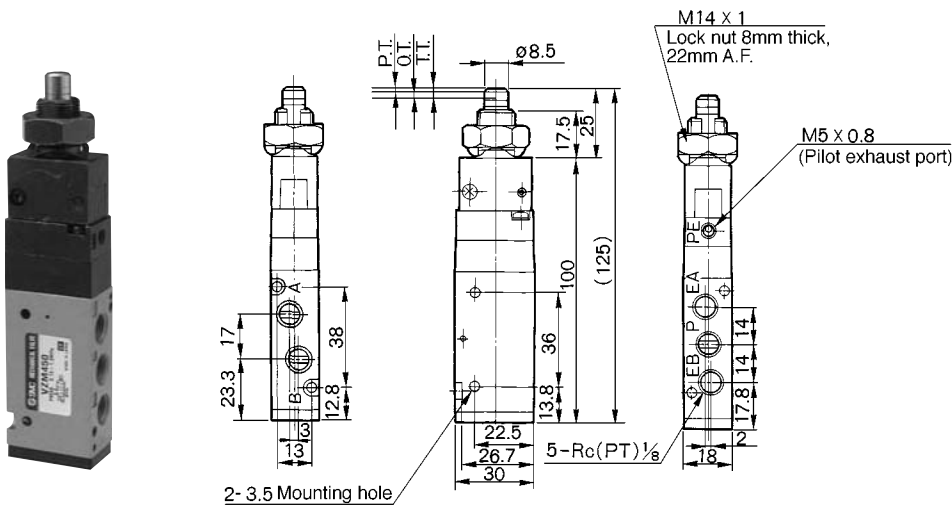
* 0.5MPa supply

F.O.F.*	7N
P.T.	2.4mm
O.T.	4.6mm
T.T.	7mm

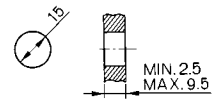
VZM400

Series VZM400

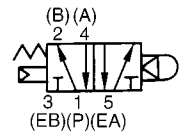
Straight Plunger/VZM450-01-05



Panel mounted hole



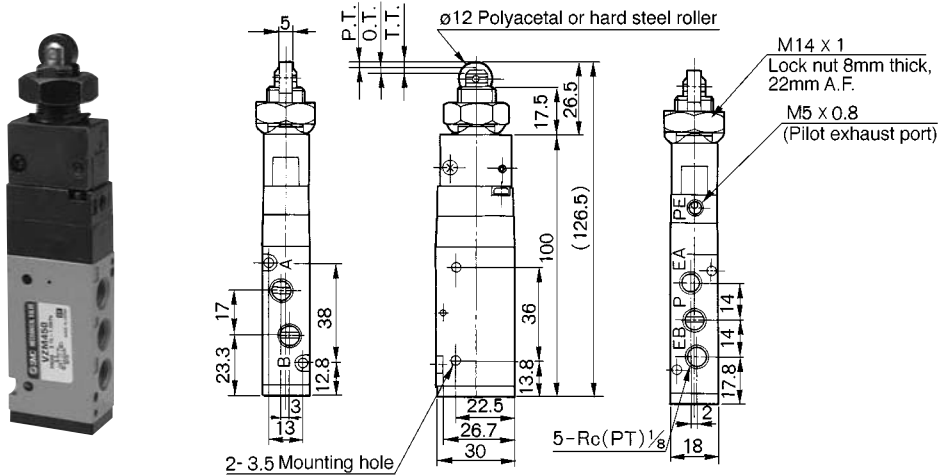
JIS Symbol



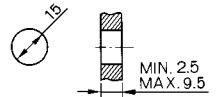
* 0.5MPa supply

F.O.F.*	18N
P.T.	1.5mm
O.T.	2mm
T.T.	3.5mm

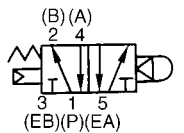
Roller Plunger/VZM450-01-06, VZM450-01-06S



Panel mounted hole



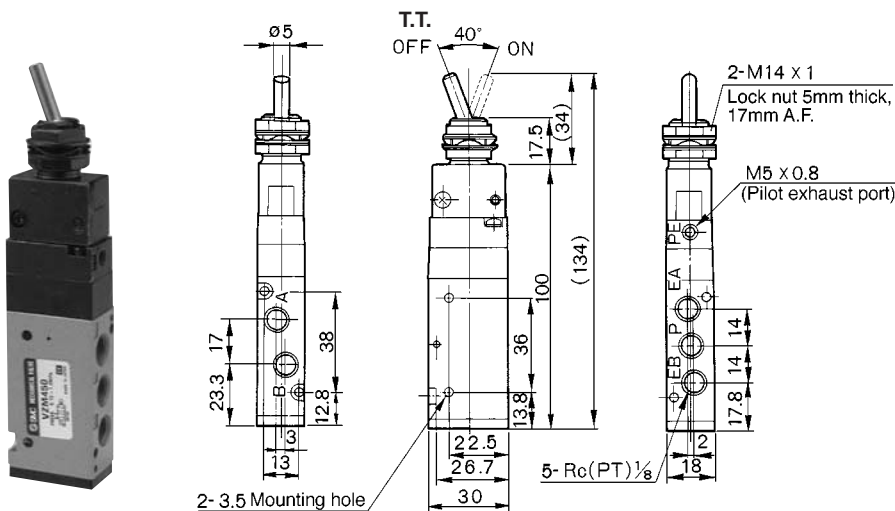
JIS Symbol



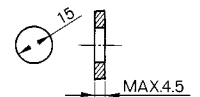
* 0.5MPa supply

F.O.F.*	18N
P.T.	1.5mm
O.T.	2mm
T.T.	3.5mm

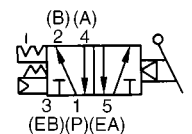
Toggle Lever/VZM450-01-08



Panel mounted hole



JIS Symbol

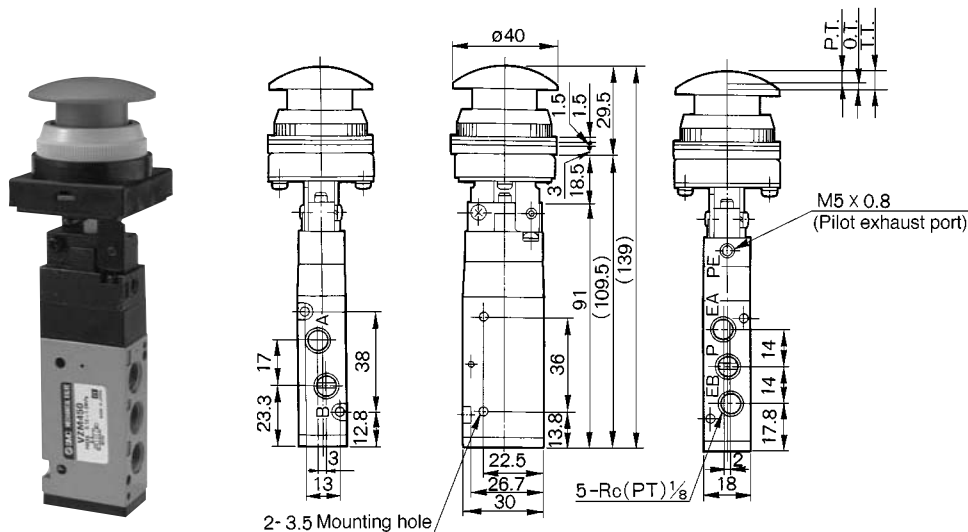


* 0.5MPa supply

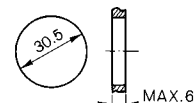
F.O.F.*	15N
T.T.	40°

Series VZM400

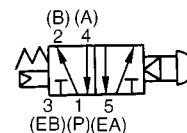
Push Button (Mushroom)/VZM450-01-30R, B, G, Y



Panel mounted hole



JIS Symbol



* 0.5MPa supply

F.O.F.*	21N
P.T.	4.8mm
O.T.	1.7mm
T.T.	6.5mm

□ A

□ A

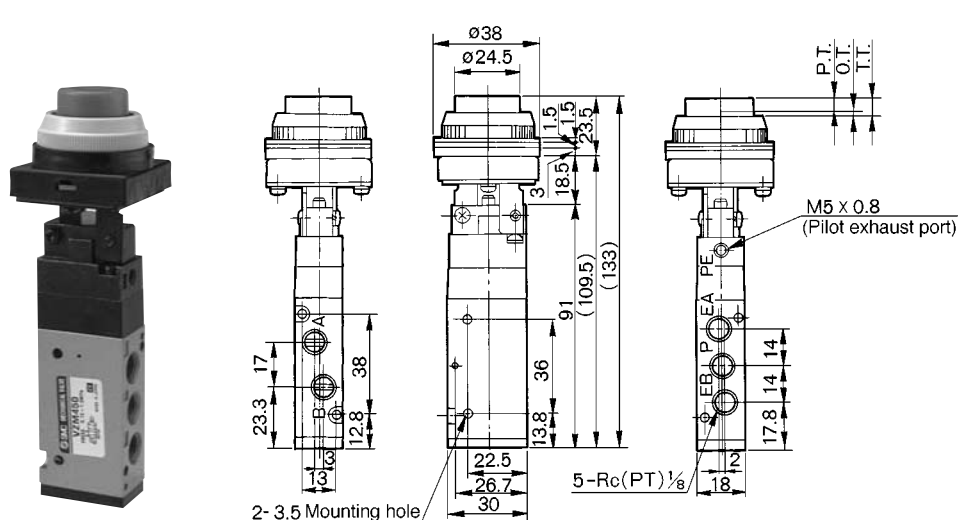
□ A

□ A

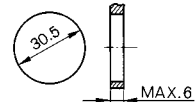
VMVR

VH

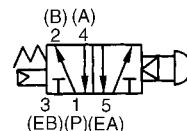
Push Button (Extended)/VZM450-01-32R, B, G, Y



Panel mounted hole



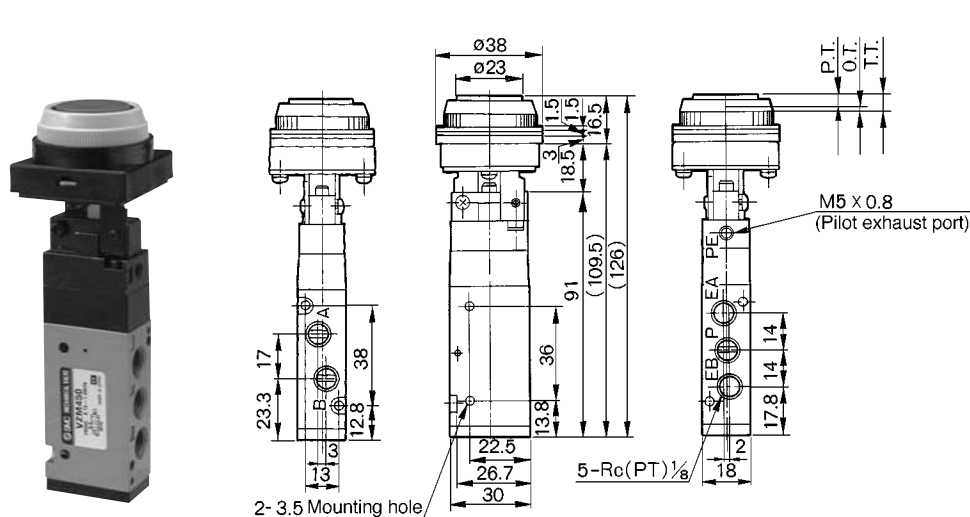
JIS Symbol



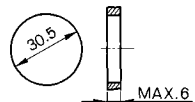
* 0.5MPa supply

F.O.F.*	21N
P.T.	4.8mm
O.T.	1.7mm
T.T.	6.5mm

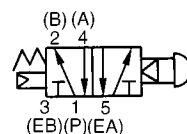
Push Button (Flush)/VZM450-01-33



Panel mounted hole



JIS Symbol



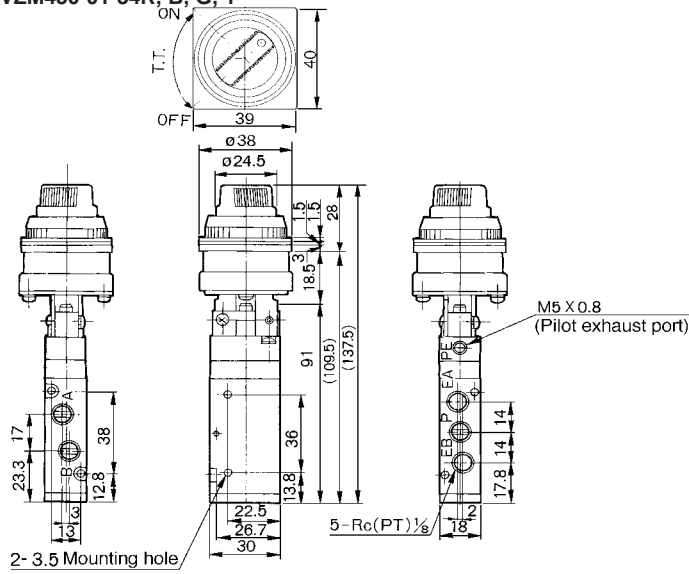
* 0.5MPa supply

F.O.F.*	21N
P.T.	4.8mm
O.T.	1.7mm
T.T.	6.5mm

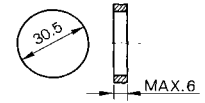
VZM400

Series VZM400

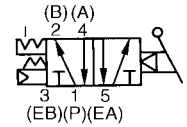
Twist Selector (2 position)/VZM450-01-34R, B, G, Y



Panel mounted hole



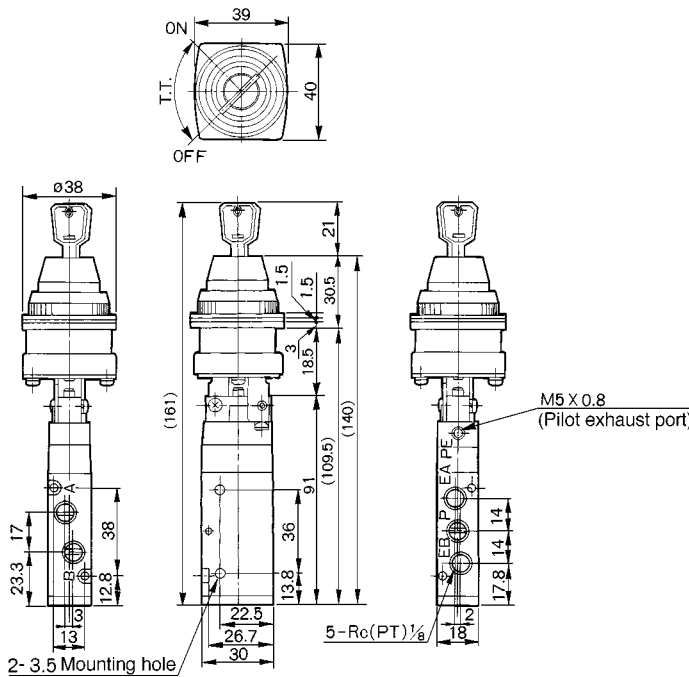
JIS Symbol



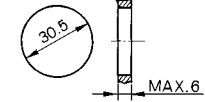
* 0.5MPa supply

F.O.F.*	23N
T.T.	90°

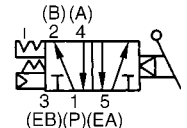
Key Selector (2 position)/VZM450-01-36



Panel mounted hole



JIS Symbol

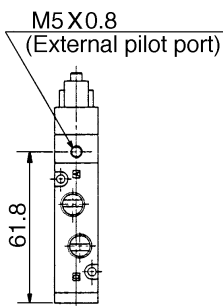


* 0.5MPa supply

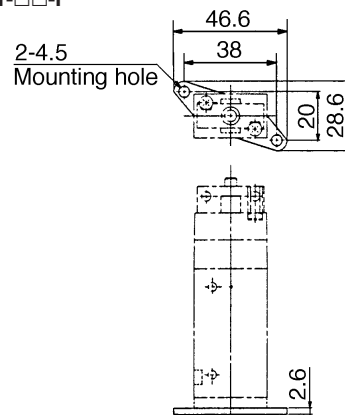
F.O.F.*	26N
T.T.	90°

Key can be removed in "on" and "off" positions.

External Pilot Style VZM451 Type



With Foot Bracket VZM450-01-□□-F

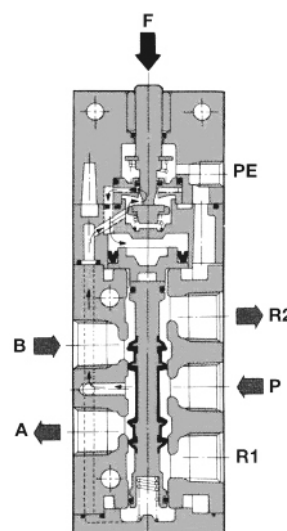


- Высокая скорость срабатывания (300 циклов/мин)

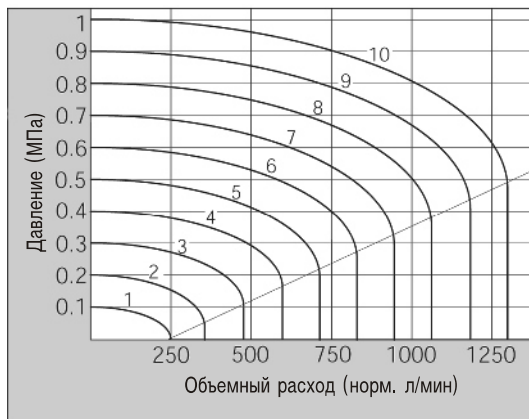


Технические характеристики

Модель	С механическим управлением						
	Базовое исполнение	Роликовый рычаг	Кнопочный выключ.	Поворотный переключ.	Ломающийся рычаг	Тумблер	
Среда	Очищенный сжатый воздух с содержанием масла или без него						
Присоединительная резьба	G1/8						
Диапазон рабочих давлений (МПа)	0.15~0.7						
Диапазон рабочих температур (°C)	5~60						
Пусковые усилия и перемещения							
	F.O.F. (Н)	16	8	21	23	7	15
	P.T. (мм)	1	2.2	4.4	-	2.4	-
	O.T. (мм)	2	4	2	-	4.6	-
	T.T. (мм)	5	11	6.5	90°	7	40°
Вес (г)	130 (базовое исполнение)						
Монтажное положение	Произвольное						
Расход (норм. л/мин)	590						



Характеристики расхода

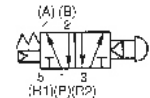
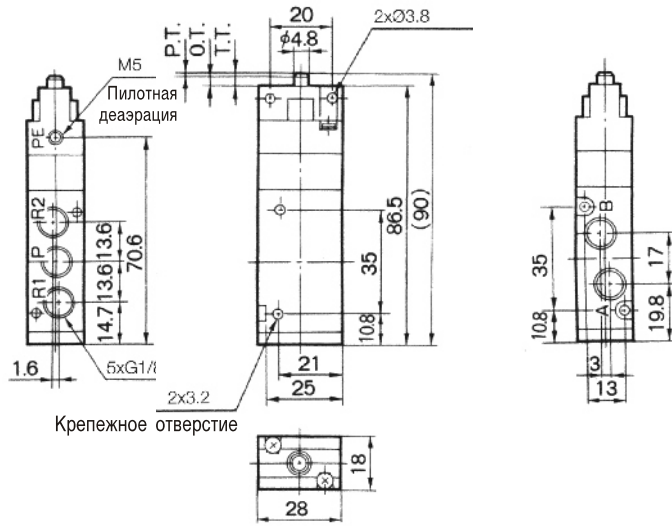


5/2 пневмораспределители с механическим управлением EVZM550

Размеры и данные по заказу

Базовое исполнение

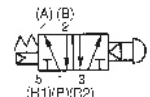
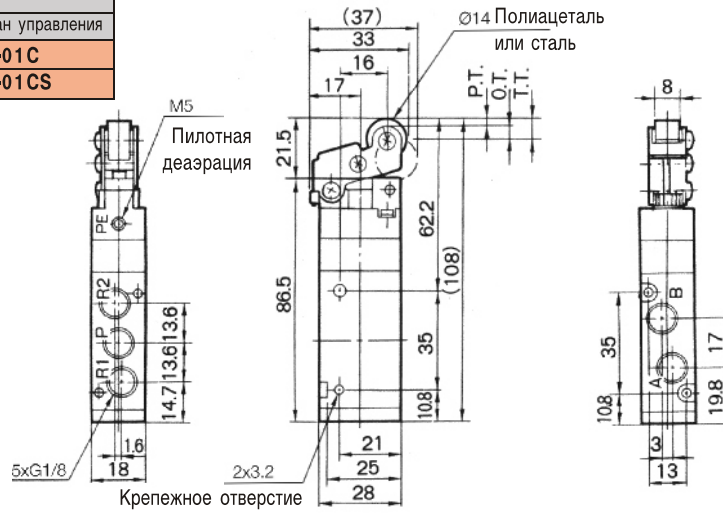
Номер для заказа	EVZM550-F01-00
------------------	----------------



С пружинным возвратом

Роликовый рычаг

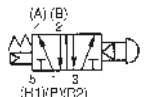
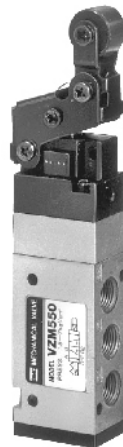
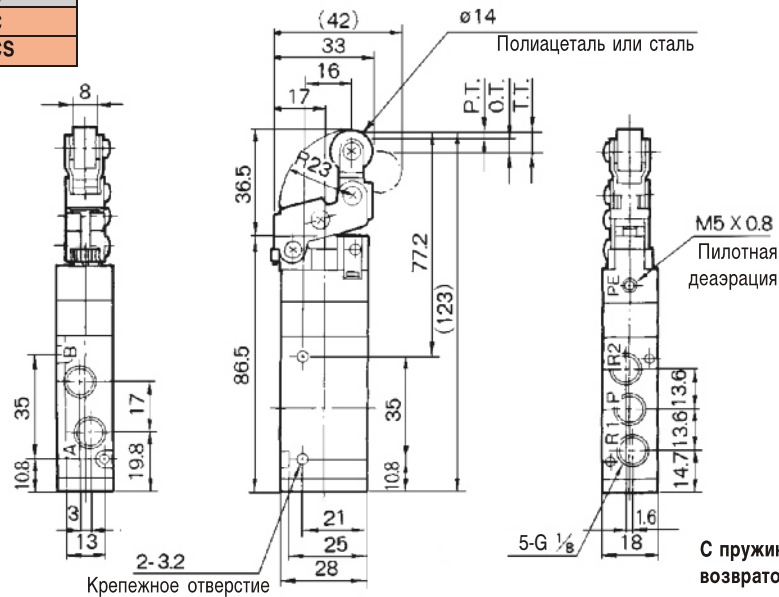
Тип ролика	Номер для заказа	
	Базовое исполнение	Орган управления
Полиацеталь	EVZM550-F01-00	VM-01 C
Сталь		VM-01 CS



С пружинным возвратом

Ломющийся рычаг

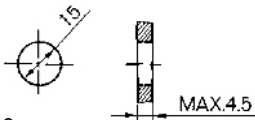
Тип ролика	Номер для заказа	
	Базовое исполнение	Орган управления
Полиацеталь	EVZM550-F01-00	VM-02 C
Сталь		VM-02 CS



С пружинным возвратом

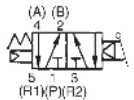
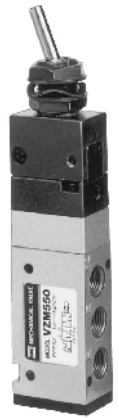
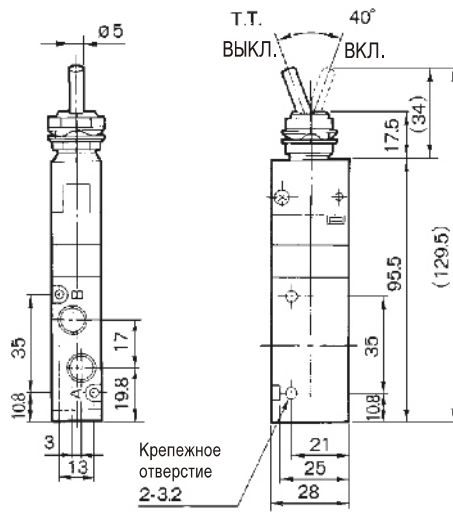
Размеры и данные по заказу

Тумблер



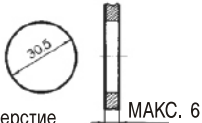
Отверстие для монтажа на щите управления

Базовое исполнение	Орган управления
EVZM550-F01-00	VM-08C



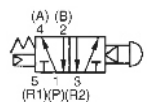
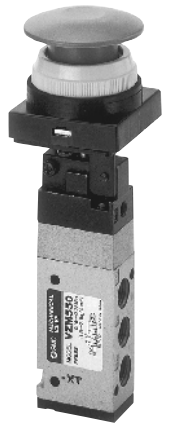
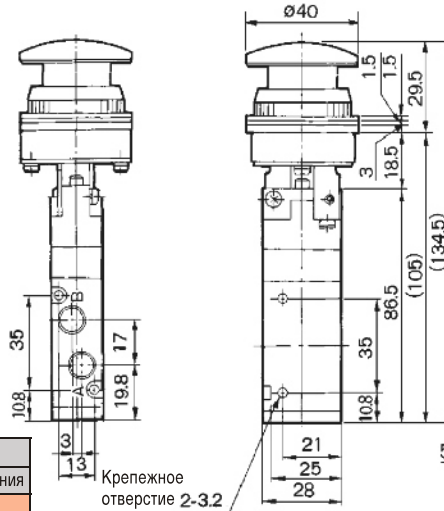
С фиксатором

Грибовидная кнопка



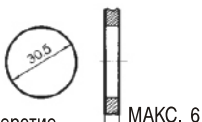
Отверстие для монтажа на щите управления

Цвет	Номер для заказа	
	Базовое исполнение	Орган управления
Красный	EVZM550-F01-00	VM-30CR
Зеленый		VM-30CG
Черный		VM-30CB



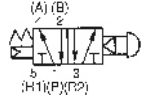
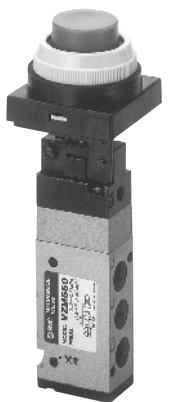
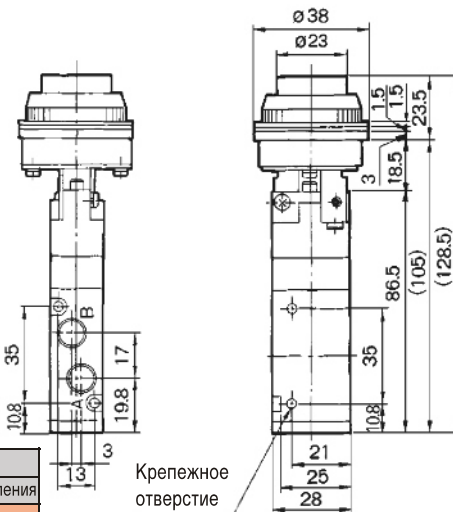
С пружинным возвратом

С выступающей кнопкой



Отверстие для монтажа на щите управления

Цвет	Номер для заказа	
	Базовое исполнение	Орган управления
Красный	EVZM550-F01-00	VM-32CR
Зеленый		VM-32CG
Черный		VM-32CB

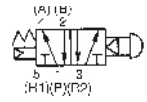
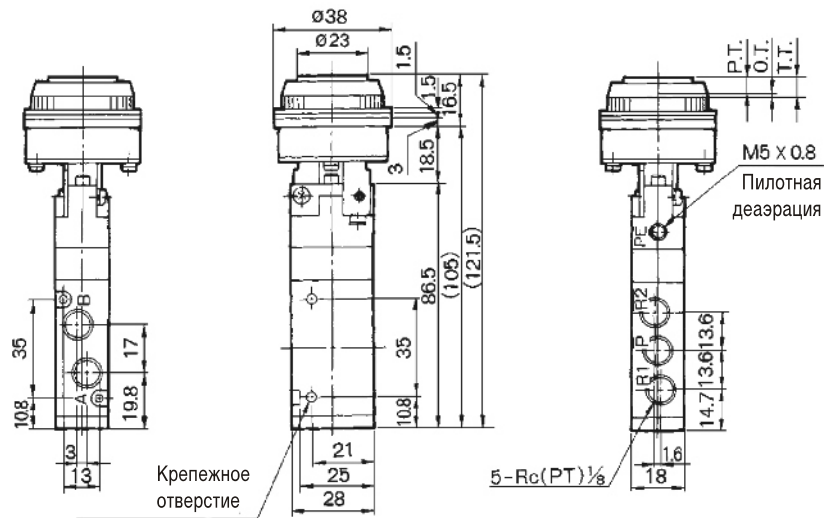


С пружинным возвратом

5/2 пневмораспределители с механическим управлением EVZM550

Размеры и данные по заказу

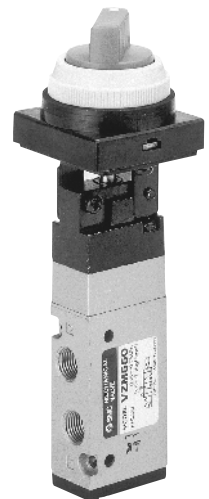
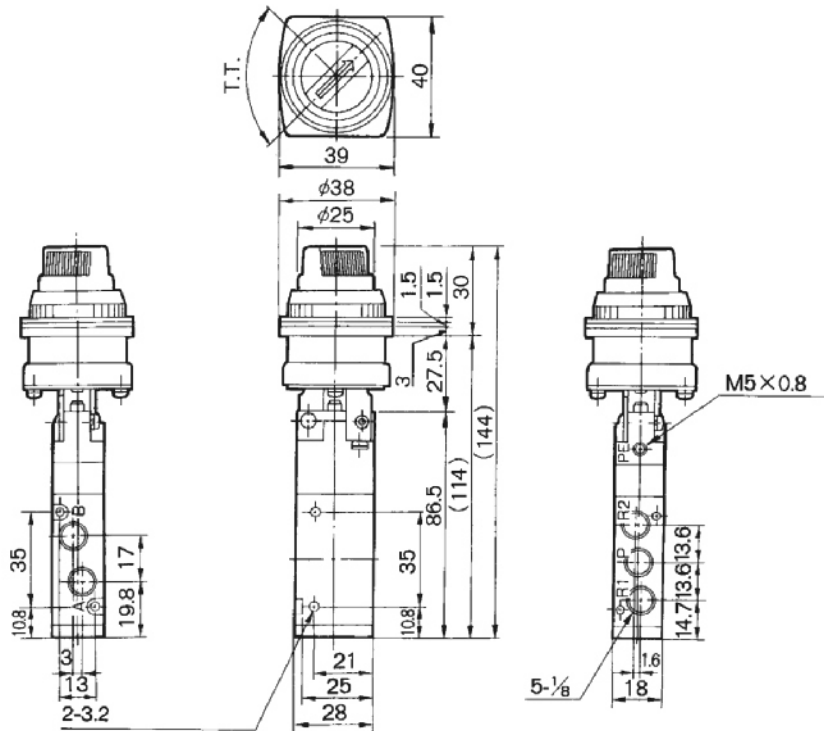
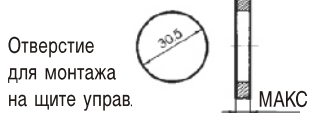
С утопленной кнопкой



С пружинным возвратом

Цвет	Номер для заказа	
	Базовое исполнение	Орган управления
Красный	EVZM550-F01-00	VM-33A
Зеленый		
Черный		
Желтый		

Поворотный переключатель



С фиксатором

Цвет	Номер для заказа	
	Базовое исполнение	Орган управления
Красный	EVZM550-F01-00	VM-34 CR
Зеленый		VM-34 CG
Черный		VM-34 CB

5 Port Mechanical Valve/Metal Seal

Series **VFM200**

**Compact design,
Large flow capacity/Cv.1.0**

**High cycle rate,
Long life/300c.p.m.**

Piping possible to any EXH port.

Proper countermeasures can be taken for applications in which the noise of the exhaust could cause problems to the surroundings.

External pilot model available. (Option)

Foot bracket and manifold mounting possible.



Specifications

Fluid	Air, Inert gas
Operating pressure	0.1 to 1.0MPa ⁽¹⁾
Ambient and fluid temperature	-5 to 60°C (No freezing)
Effective area (Cv)	18mm ² (1.0)
Maximum frequency (Mechanical operation style)	300 c.p.m or less
Lubrication	Not required/Turbine oil #1 (ISO VG32)
Port size (Nominal size)	Main valve Rc(PT) 1/4 (8A)
	Pilot valve (EXH)/M5 X 0.8
Option	Foot bracket ⁽²⁾
Weight (Basic)	300g



* Contact SMC for manifold mounting style.

Note 1) External pilot style Main valve: 0 to 1.0MPa
Pilot valve: 0.1 to 1.0MPa

Note 2) The standard body can not be retrofitted with a foot bracket.

Model

	Actuator	Model	Actuator part No.	Application
Mechanical operation	Basic	VFM250-02-00	—	—
	Roller lever	VFM250-02-01	VM-01C	Polyacetal roller
		VFM250-02-01S	VM-01CS	Hard steel roller
	One way roller lever	VFM250-02-02	VM-02C	Polyacetal roller
		VFM250-02-02S	VM-02CS	Hard steel roller
	Straight plunger	VFM250-02-05	VM-05D	—
Roller plunger	VFM250-02-06	VM-06D	Polyacetal roller	
	VFM250-02-06S	VM-06DS	Hard steel roller	
Manual operation	Toggle lever	VFM250-02-08	VM-08D	—
	Push button (Mushroom)	VFM250-02-30R	VM-30CR	Red
		VFM250-02-30B	VM-30CB	Black
		VFM250-02-30G	VM-30CG	Green
		VFM250-02-30Y	VM-30CY	Yellow
	Push button (Extended)	VFM250-02-32R	VM-32CR	Red
		VFM250-02-32B	VM-32CB	Black
		VFM250-02-32G	VM-32CG	Green
		VFM250-02-32Y	VM-32CY	Yellow
	Push button (Flush)	VFM250-02-33	VM-33C	With a set of red, black, green, yellow
	Twist selector (2 position)	VFM250-02-34R	VM-34CR	Red
		VFM250-02-34B	VM-34CB	Black
		VFM250-02-34G	VM-34CG	Green
		VFM250-02-34Y	VM-34CY	Yellow
	Key selector (2 position)	VFM250-02-36	VM-36C	—



Note) Actuator replacement is available for all styles.

How to Order

VFM25 0 02 01 S

Body option		Port size		Actuator		Suffix of actuator		Option	
0	Internal pilot style	02	Rc(PT) 1/4	00	Basic	S	Hard steel roller	F	Foot bracket (Only internal pilot)
1	External pilot style			01	Roller lever	R	Red		
				02	One way roller lever	B	Black		
				05	Straight plunger	G	Green		
				06	Roller plunger	Y	Yellow		
				08	Toggle lever				
				30	Push button (Mushroom)				
				32	Push button (Extended)				
				33	Push button (Flush)				
				34	Twist selector (2 position)				
				36	Key selector (2 position)				

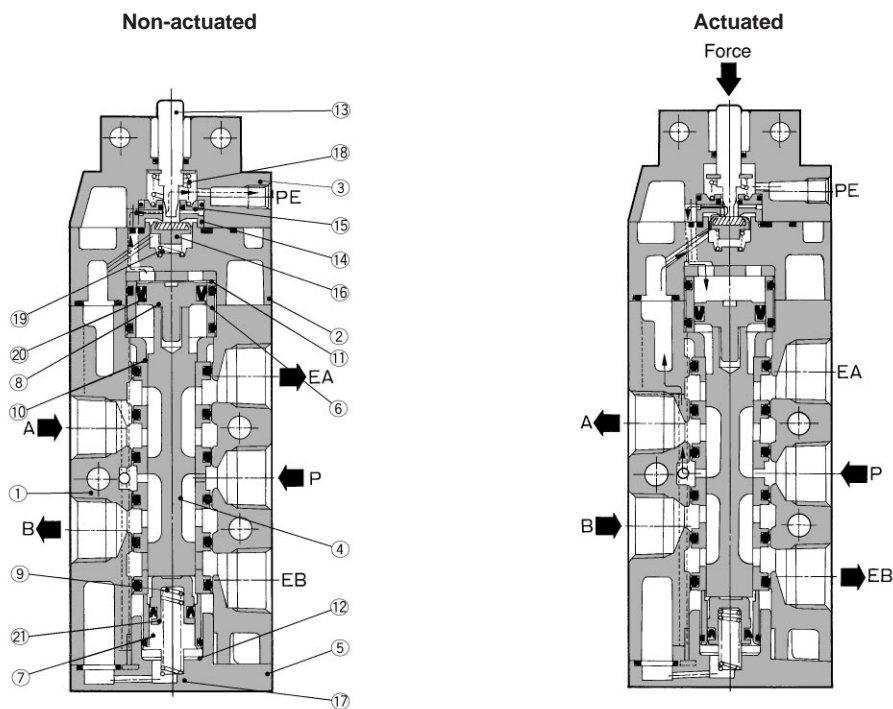
S□A

V□A

S□A

V□A

Construction



VMVR

VH

Component Parts

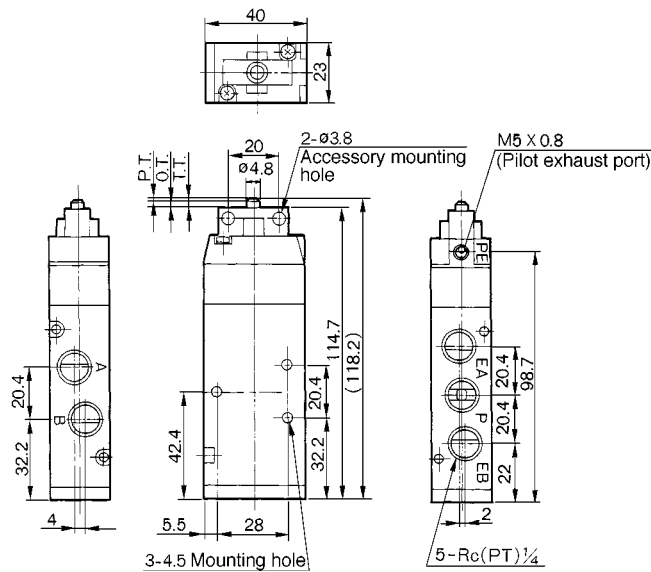
No.	Description	Material	Notes
①	Body	Aluminum alloy	Metallic plated
②	Pilot body	Zinc alloy	Metallic plated
③	Head cover	Zinc alloy	Black zinc chromate
④	Spool/sleeve	Stainless steel	
⑤	End cover	Polyacetal	
⑥	Piston guide	Brass	
⑦	Piston guide for end cover	Brass	
⑧	Piston	Polyacetal	
⑨	Piston for end cover	Polyacetal	
⑩	Guide bushing	Polyacetal	
⑪	Cushion	Urethane rubber	

No.	Description	Material	Notes
⑫	Cushion for end cover	Urethane rubber	
⑬	Plunger	Stainless steel	
⑭	Valve seat (A)	Brass	
⑮	Valve seat (B)	Brass	
⑯	Valve	NBR, Brass	
⑰	Return spring	Stainless steel	
⑱	Return spring	Stainless steel	
⑲	Valve spring	Stainless steel	
⑳	Mini Y packing	NBR	
㉑	Mini Y packing	NBR	

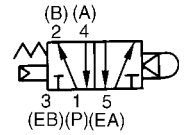
VFM200

Series VFM200

Basic/VFM250-02-00



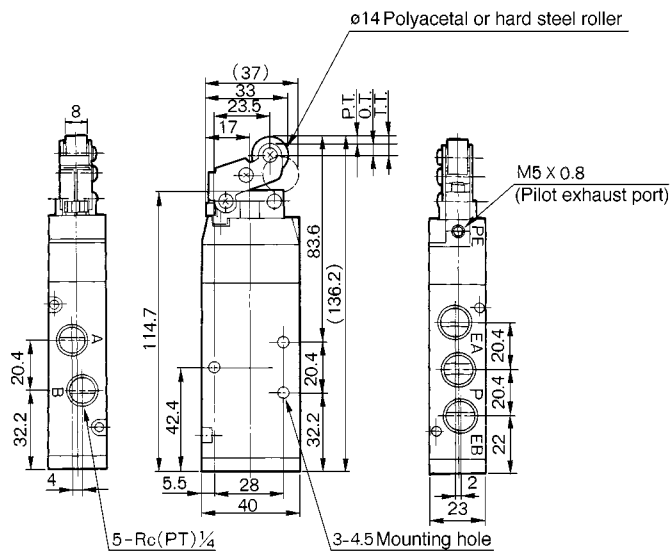
JIS Symbol



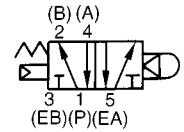
* 0.5MPa supply

F.O.F.*	16N
P.T.	1mm
O.T.	2mm
T.T.	3mm

Roller Lever/VFM250-02-01, VFM250-02-01S



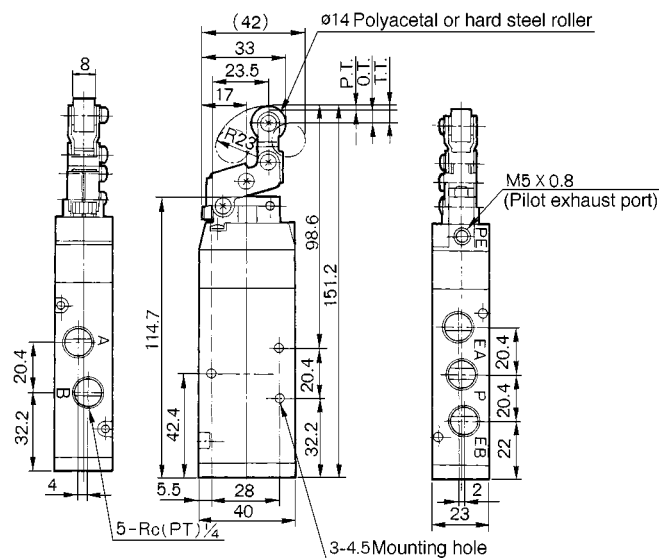
JIS Symbol



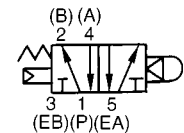
* 0.5MPa supply

F.O.F.*	8N
P.T.	2.2mm
O.T.	4mm
T.T.	6.2mm

One Way Roller Lever/VFM250-02-02, VFM250-02-02S



JIS Symbol

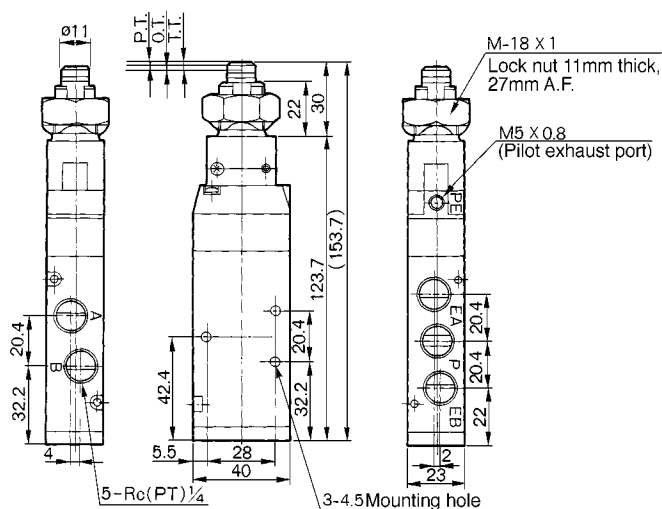


* 0.5MPa supply

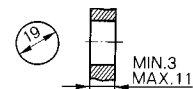
F.O.F.*	7N
P.T.	2.4mm
O.T.	4.6mm
T.T.	7mm

Series VFM200

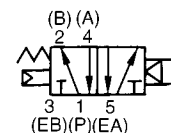
Straight Plunger/VFM250-02-05



Panel mounted hole



JIS Symbol



* 0.5MPa supply

F.O.F.*	20N
P.T.	1.5mm
O.T.	2mm
T.T.	3.5mm

□A

□A

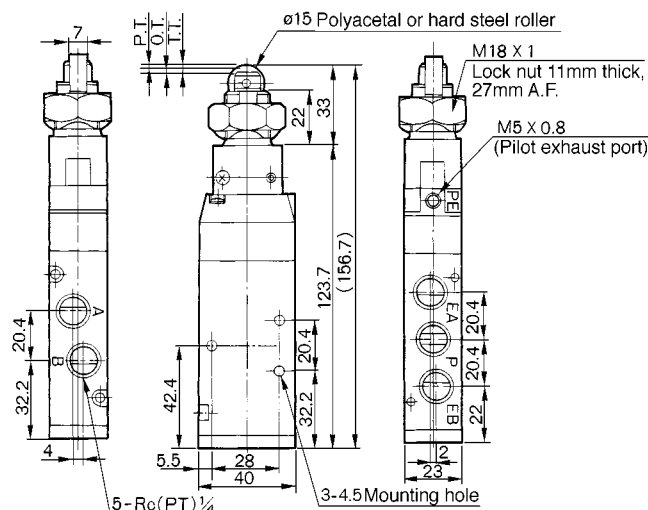
□A

□A

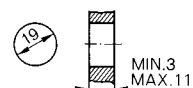
VMVR

VH

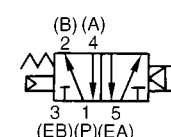
Roller Plunger/VFM250-02-06, VFM250-02-06S



Panel mounted hole



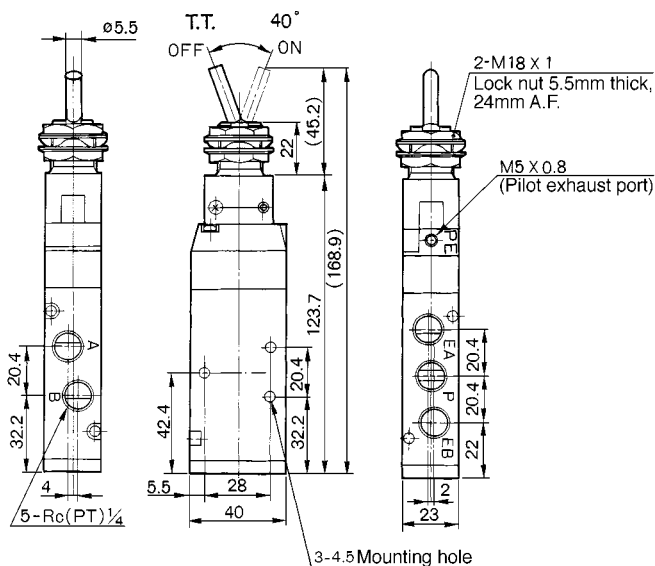
JIS Symbol



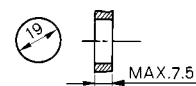
* 0.5MPa supply

F.O.F.*	20N
P.T.	1.5mm
O.T.	2mm
T.T.	3.5mm

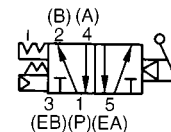
Toggle Lever/VFM250-02-08



Panel mounted hole



JIS Symbol



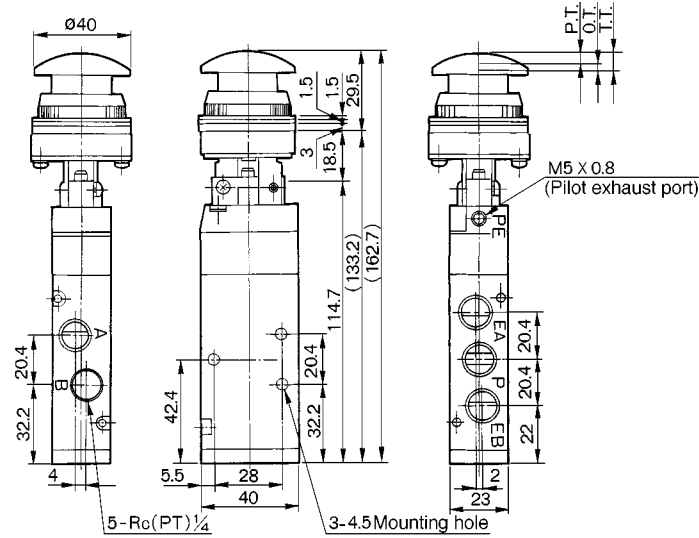
* 0.5MPa supply

F.O.F.*	15N
T.T.	40°

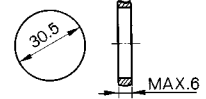
VFM200

Series VFM200

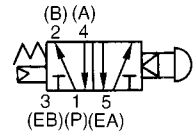
Push Button (Mushroom)/VFM250-02-30R, B, G, Y



Panel mounted hole



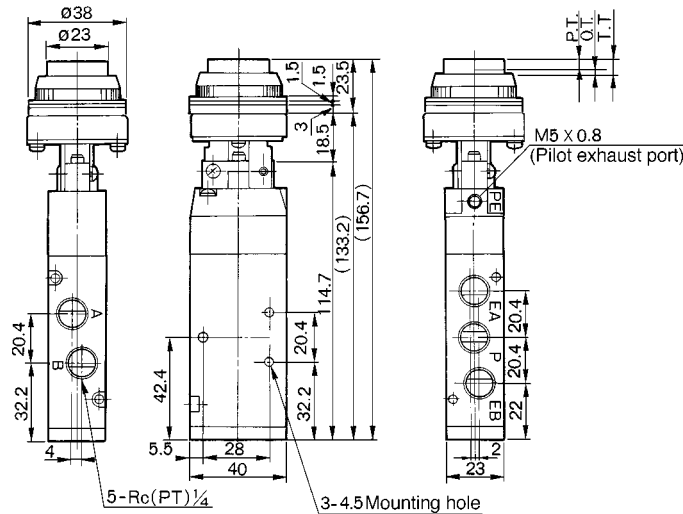
JIS Symbol



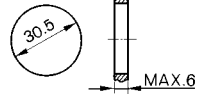
* 0.5MPa supply

F.O.F.*	21N
P.T.	4.8mm
O.T.	1.7mm
T.T.	6.5mm

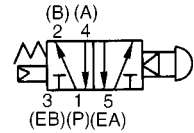
Push Button (Extended)/VFM250-02-32R, B, G, Y



Panel mounted hole



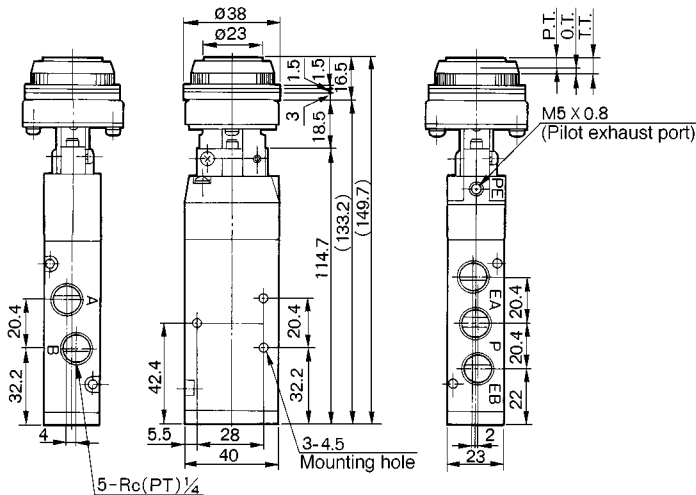
JIS Symbol



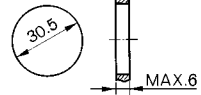
* 0.5MPa supply

F.O.F.*	21N
P.T.	4.8mm
O.T.	1.7mm
T.T.	6.5mm

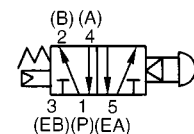
Push Button (Flush)/VFM250-02-33



Panel mounted hole



JIS Symbol

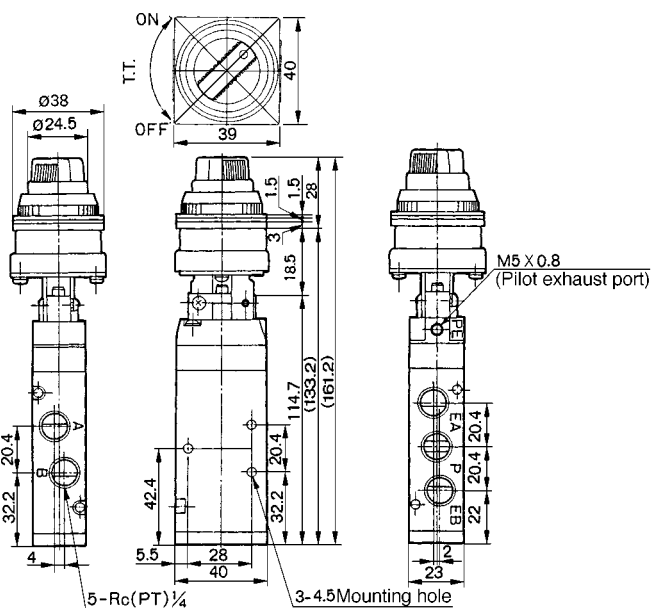


* 0.5MPa supply

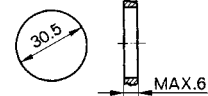
F.O.F.*	21N
P.T.	4.8mm
O.T.	1.7mm
T.T.	6.5mm

Series VFM200

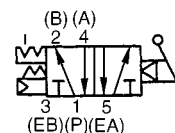
Twist Selector (2 position)/ VFM250-02-34R, B, G, Y



Panel mounted hole



JIS Symbol



* 0.5MPa supply

F.O.F.*	23N
T.T.	90°

S□A

V□A

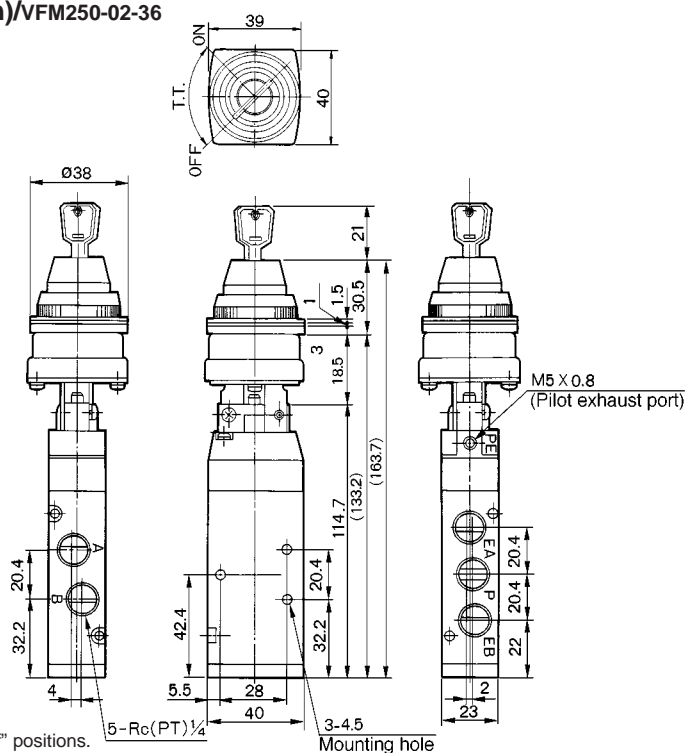
S□A

V□A

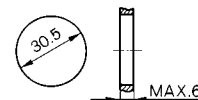
VMVR

VH

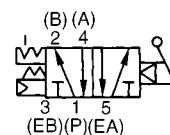
Key Selector (2 position)/VFM250-02-36



Panel mounted hole



JIS Symbol

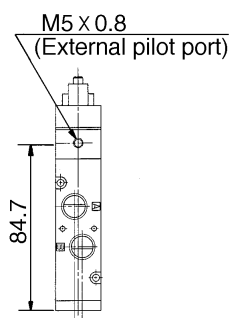


* 0.5MPa supply

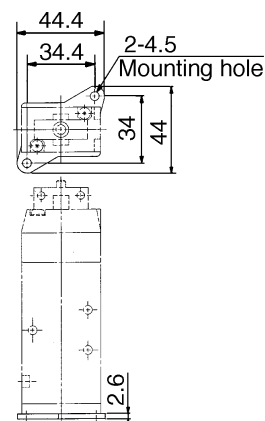
F.O.F.*	26N
T.T.	90°

Key can be removed in "on" and "off" positions.

External Pilot Style VFM251 Type

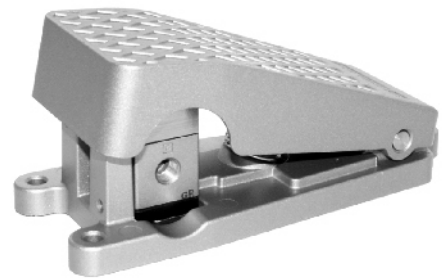


With Foot Bracket VFM250-02-□□-F



Технические характеристики

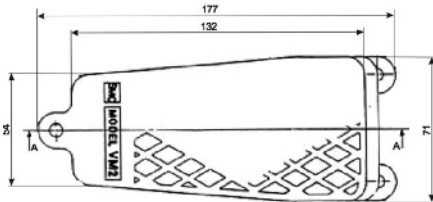
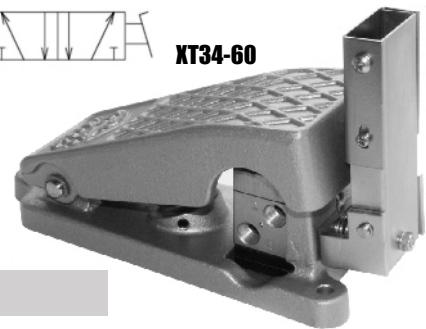
Номер для заказа	ХТ34-60	ХТ34-67
Блокировка положения	С блокировкой	Без блокировки
Среда	Сжатый воздух	
Максимальное рабочее давление (МПа)	0.9	
Минимальное рабочее давление (МПа)	0.15	
Температура рабочей и окружающей среды (°C)	-5 ~ +60	
Расход (норм. л/мин)	150	
Полный ход (Т.Т.)	3ε	2.5ε
Усилие для полного хода (F.O.F)	55Н	
Путь для снятия блокировки	7ε	-
Усилие для снятия блокировки	3.5Н	-
Вес (кг)	0.5	



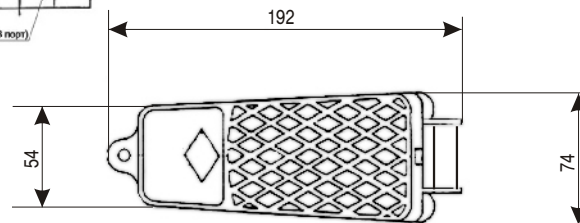
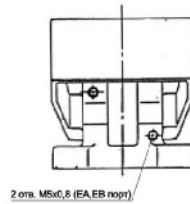
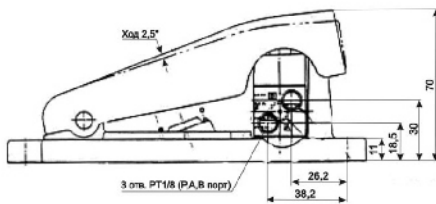
ХТ34-67



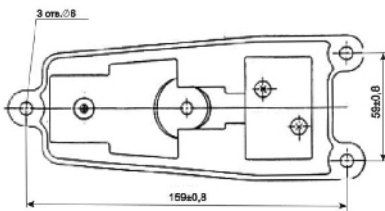
ХТ34-60



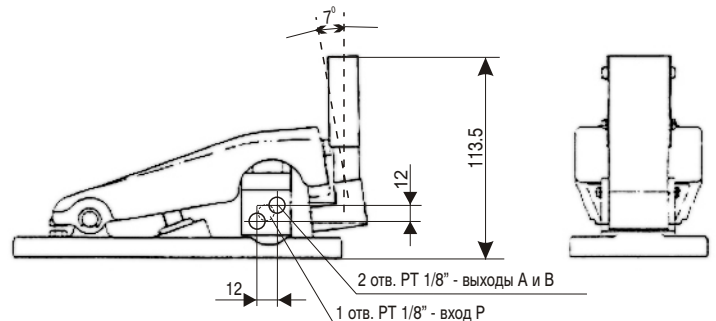
Размеры



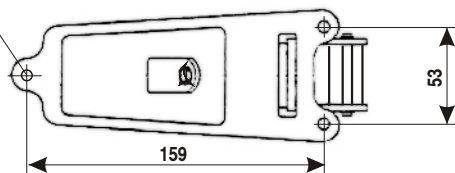
ХТ34-60



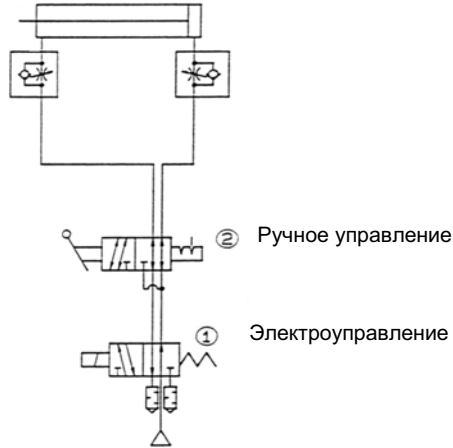
ХТ34-67



3 отв. Ш6






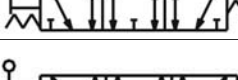
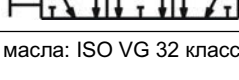


- Золотник из нержавеющей стали
- Возможность комбинированного ручного и пневматического управления (VSH4110A и VSH4210C)
- Возможность реверсивного подключения



Технические характеристики

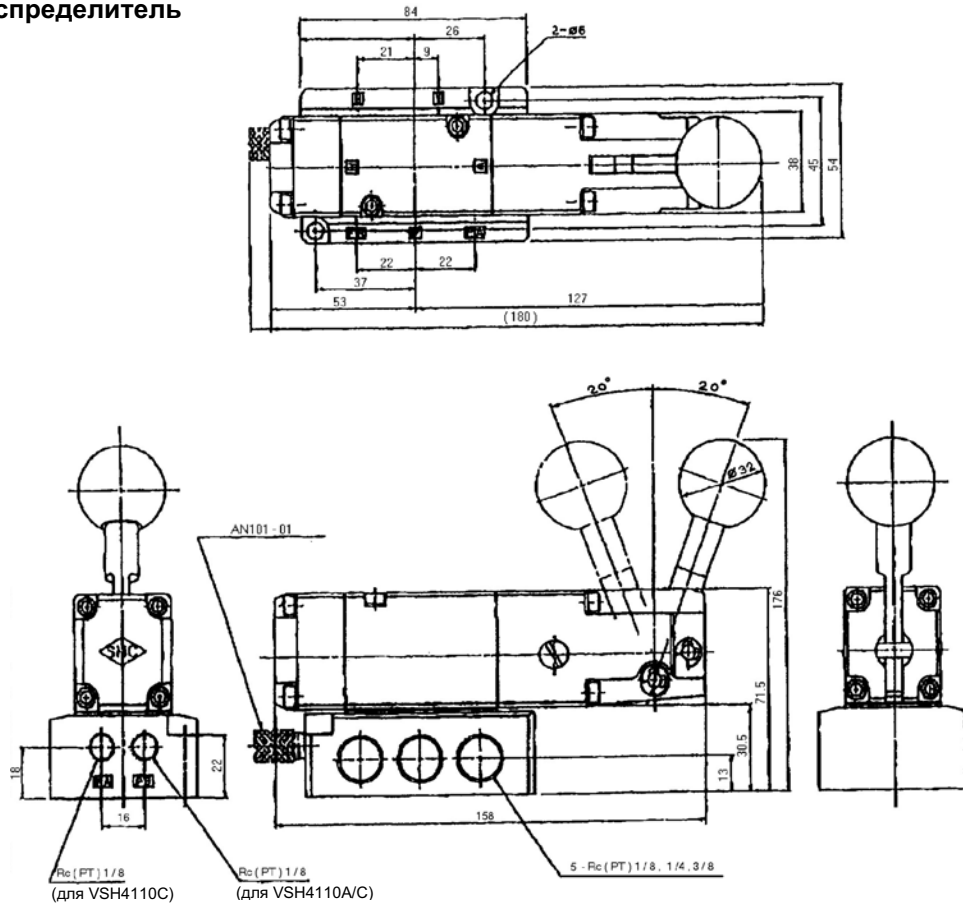
Среда	Сжатый воздух с содержанием масла* или без него
Тип управления	Ручное
Макс.рабочее давление (МПа)	1.0
Пилотное давление (МПа) (для VSH4110A и VSH4210C)	0.15~1.0
Монтажное положение	Произвольное

Номер для заказа	Условное обозначение	Присоед. резьба	Характеристики расхода мм ² (Cv)
VSH4110-01 VSH4110-02 VSH4110-03		Rc1/8 Rc1/4 Rc3/8	14.4 (0.8) 18.0 (1.0) 18.0 (1.0)
VSH4110A-01 VSH4110A-02 VSH4110A-03		Rc1/8 Rc1/4 Rc3/8	14.4 (0.8) 18.0 (1.0) 18.0 (1.0)
VSH4210B-01 VSH4210B-02 VSH4210B 03		Rc1/8 Rc1/4 Rc3/8	14.4 (0.8) 18.0 (1.0) 18.0 (1.0)
VSH4210C-01 VSH4210C 02 VSH4210C-03		Rc1/8 Rc1/4 Rc3/8	14.4 (0.8) 18.0 (1.0) 18.0 (1.0)
VSH4310-01 VSH4310-02 VSH4310-03		Rc1/8 Rc1/4 Rc3/8	14.4 (0.8) 18.0 (1.0) 18.0 (1.0)
VSH4310A-01 VSH4310A-02 VSH4310A-03		Rc1/8 Rc1/4 Rc3/8	14.4 (0.8) 18.0 (1.0) 18.0 (1.0)
VSH4410B-01 VSH4410B-02 VSH4410B-03		Rc1/8 Rc1/4 Rc3/8	14.4 (0.8) 18.0 (1.0) 18.0 (1.0)
VSH4410C-01 VSH4410C-02 VSH4410C-03		Rc1/8 Rc1/4 Rc3/8	14.4 (0.8) 18.0 (1.0) 18.0 (1.0)

*Рекомендуемое качество масла: ISO VG 32 класс 1

Размеры

5/2 пневмораспределитель



5/3 пневмораспределитель

